

**Estimated Population of Ireland
in the 19th Century**

by

Frank O'Donovan

August 2017

The first complete Government Census of Ireland was taken in 1821 and thereafter, at ten-yearly intervals. A census was carried out in Ireland from 1831 through to 1911. No census was taken in 1921, because of the War of Independence and the first census of the population of the Irish Free State was taken in 1926.

Writers quote figures for annual estimates of population based on differing time periods including the calendar year, figures estimated in April and mid-year figures. I am using the sets of figures issued in “*Documenting Ireland: Parliament, People and Migration*”.

From the 1891 annual report of “*Documenting Ireland: Parliament, People and Migration*” we have most of the following figures **estimated** to the middle of each year: More recent reports are used to provide data up to and including 1914 as in Table 1.

| Year | Population | Year | Population | Year | Population |
|------|------------|------|------------|------|------------|
| 1801 | 5,216,329 | 1839 | 8,111,438 | 1877 | 5,286,380 |
| 1802 | 5,285,994 | 1840 | 8,155,521 | 1878 | 5,282,246 |
| 1803 | 5,356,594 | 1841 | 8,199,853 | 1879 | 5,265,625 |
| 1804 | 5,428,135 | 1842 | 8,220,926 | 1880 | 5,202,648 |
| 1805 | 5,500,636 | 1843 | 8,239,832 | 1881 | 5,145,770 |
| 1806 | 5,574,105 | 1844 | 8,276,627 | 1882 | 5,101,018 |
| 1807 | 5,648,558 | 1845 | 8,295,061 | 1883 | 5,023,811 |
| 1808 | 5,724,008 | 1846 | 8,287,648 | 1884 | 4,974,561 |
| 1809 | 5,800,464 | 1847 | 8,025,274 | 1885 | 4,938,588 |
| 1810 | 5,877,946 | 1848 | 7,639,800 | 1886 | 4,905,895 |
| 1811 | 5,956,466 | 1849 | 7,256,314 | 1887 | 4,857,119 |
| 1812 | 6,036,034 | 1850 | 6,877,549 | 1888 | 4,801,312 |
| 1813 | 6,116,668 | 1851 | 6,514,473 | 1889 | 4,757,385 |
| 1814 | 6,198,381 | 1852 | 6,336,889 | 1890 | 4,717,959 |
| 1815 | 6,281,188 | 1853 | 6,198,984 | 1891 | 4,681,248 |
| 1816 | 6,365,103 | 1854 | 6,083,183 | 1892 | 4,633,808 |
| 1817 | 6,450,141 | 1855 | 6,014,665 | 1893 | 4,607,462 |
| 1818 | 6,536,316 | 1856 | 5,972,851 | 1894 | 4,589,260 |
| 1819 | 6,623,645 | 1857 | 5,919,454 | 1895 | 4,559,936 |
| 1820 | 6,712,144 | 1858 | 5,890,814 | 1896 | 4,542,061 |
| 1821 | 6,801,827 | 1859 | 5,861,711 | 1897 | 4,529,917 |
| 1822 | 6,892,708 | 1860 | 5,820,960 | 1898 | 4,518,478 |
| 1823 | 6,984,809 | 1861 | 5,788,415 | 1899 | 4,502,401 |
| 1824 | 7,078,140 | 1862 | 5,775,588 | 1900 | 4,468,501 |
| 1825 | 7,172,722 | 1863 | 5,718,235 | 1901 | 4,445,630 |
| 1826 | 7,268,570 | 1864 | 5,640,527 | 1902 | 4,434,551 |
| 1827 | 7,365,700 | 1865 | 5,594,589 | 1903 | 4,417,757 |
| 1828 | 7,464,131 | 1866 | 5,522,942 | 1904 | 4,408,103 |
| 1829 | 7,563,878 | 1867 | 5,486,509 | 1905 | 4,399,308 |
| 1830 | 7,664,964 | 1868 | 5,465,914 | 1906 | 4,397,571 |
| 1831 | 7,767,401 | 1869 | 5,449,094 | 1907 | 4,388,451 |
| 1832 | 7,809,578 | 1870 | 5,418,512 | 1908 | 4,384,664 |
| 1833 | 7,851,988 | 1871 | 5,398,179 | 1909 | 4,386,601 |
| 1834 | 7,894,634 | 1872 | 5,372,890 | 1910 | 4,385,421 |
| 1835 | 7,937,516 | 1873 | 5,327,938 | 1911 | 4,383,608 |
| 1836 | 7,980,637 | 1874 | 5,298,979 | 1912 | 4,384,710 |
| 1837 | 8,023,995 | 1875 | 5,278,629 | 1913 | 4,379,012 |
| 1838 | 8,067,596 | 1876 | 5,277,544 | 1914 | 4,381,398 |

Table 1

The above figures are graphically represented in the following chart, Fig. 1

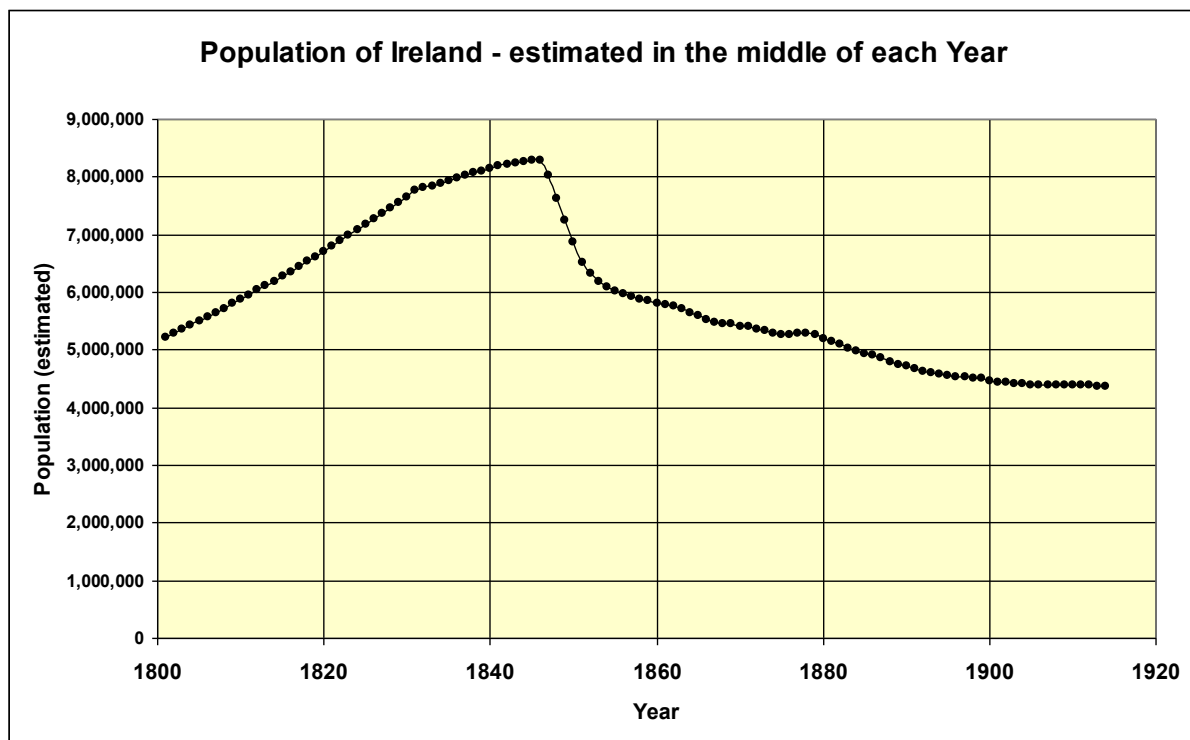


Fig. 1

In the mid 1840's just prior to the famine the estimated population of Ireland was around eight and a quarter million people. Some writers believe it may have been higher and even up to, or above, 9 million. However, whichever figure one adopts we can see from the above chart that there is a near vertical drop in the estimated population of Ireland from 1847 to 1853, which was the period of the Great Famine and a drop in population of 1.8m people. Of course if, as some scholars claim, the population of Ireland was higher then the drop in population would be so much greater.

Rounded figures from some scholars suggest that about one million people died from starvation and a similar number left the country. Such approximations do fit into the population figures provided by the annual reports in *Documenting Ireland: Parliament, People and Migration*.

Population for Census years

The table following shows the population for the census years 1821 to 1926.

| Year | Population | Year | Population | Year | Population |
|------|------------|------|------------|------|------------|
| 1821 | 6,801,827 | 1861 | 5,788,415 | 1901 | 4,445,630 |
| 1831 | 7,767,401 | 1871 | 5,398,179 | 1911 | 4,383,608 |
| 1841 | 8,199,853 | 1881 | 5,145,770 | 1926 | 4,228,553 |
| 1851 | 6,514,473 | 1891 | 4,681,248 | | |

Table 2

Looking at Census figures we note the sharp drop in population between the 1841 and 1851 census returns. The census figures are represented graphically on the following chart, Fig. 2

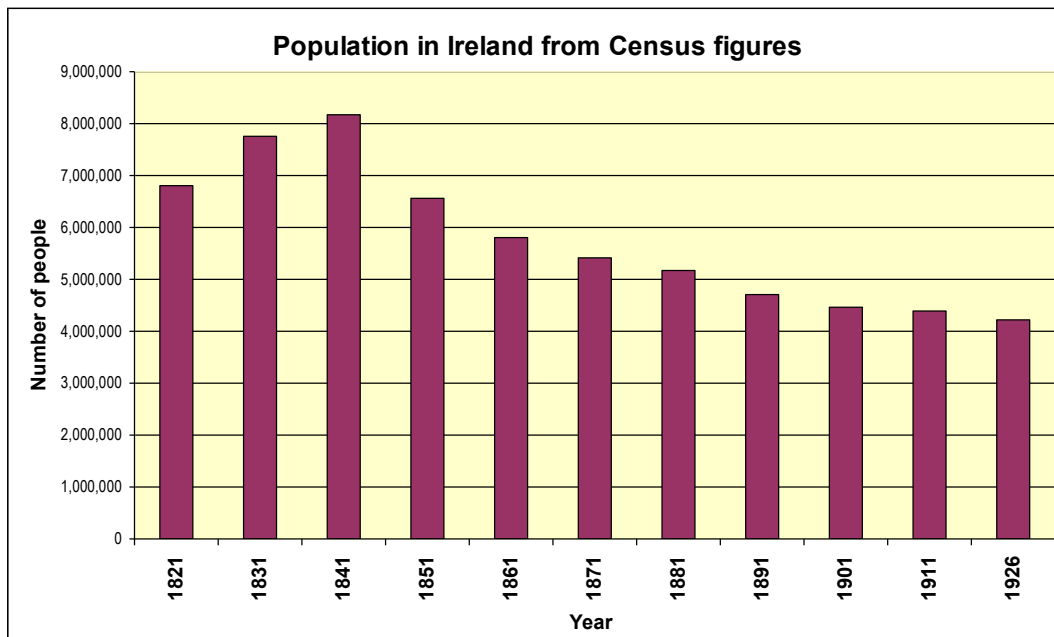


Fig 2

Because of the 10 year intervals in the census figures and 1841 being the last census before the famine the drop in population for the famine era is less pronounced in this chart. However it was a catastrophic event in Ireland.

Population in age brackets

Let us look at population numbers for various age brackets. This data is already summarised on the thirty-ninth detailed annual report of the Registrar-General (Ireland) of the Marriages, Births and Deaths registered in Ireland during 1902.

The data is taken from the various census returns and as we notice there are some small variations in the total population per census in these figures when compared with earlier data. However the percentage error is less than half a percent in most cases.

From the figures on *Documenting Ireland: Parliament, People and Migration* we have:

| Age category | 1861 | 1871 | 1881 | 1891 | 1901 | 1911 |
|-----------------|------------------|------------------|------------------|------------------|------------------|------------------|
| Under 1 | 136,813 | 133,350 | 104,965 | 90,789 | 86,522 | 85,577 |
| 1 and under 5 | 556,898 | 519,966 | 471,018 | 379,584 | 352,570 | 347,815 |
| 5 and under 10 | 611,244 | 632,178 | 621,637 | 508,772 | 447,470 | 436,171 |
| 10 and under 15 | 597,021 | 629,782 | 616,370 | 549,922 | 456,237 | 425,446 |
| 15 and under 20 | 672,831 | 531,627 | 558,956 | 549,908 | 469,299 | 421,583 |
| 20 and under 25 | 615,110 | 457,744 | 477,296 | 444,502 | 440,013 | 375,728 |
| 25 and under 35 | 758,127 | 732,749 | 633,782 | 598,058 | 649,987 | 634,485 |
| 35 and under 45 | 595,762 | 544,015 | 558,776 | 488,112 | 476,710 | 533,619 |
| 45 and under 55 | 547,528 | 476,797 | 443,055 | 458,623 | 410,191 | 392,620 |
| 55 and under 65 | 428,956 | 424,886 | 364,120 | 334,141 | 348,545 | 281,571 |
| 65 and under 75 | 184,121 | 224,791 | 213,571 | 191,209 | 190,150 | 313,345 |
| 75 and under 85 | 76,457 | 83,456 | 93,675 | 90,208 | 77,870 | 109,743 |
| 85 and under 95 | 12,293 | 14,859 | 12,508 | 17,100 | 14,149 | 14,692 |
| 95 and upwards | 1,968 | 2,408 | 2,111 | 2,036 | 1,889 | 1,342 |
| N/R | <u>3,838</u> | <u>3,769</u> | <u>2,996</u> | <u>1,786</u> | <u>8,264</u> | <u>10,782</u> |
| Total | 5,798,967 | 5,412,377 | 5,174,836 | 4,704,750 | 4,429,866 | 4,384,519 |

Table 3

And these figures are graphically represented below in Fig. 3.

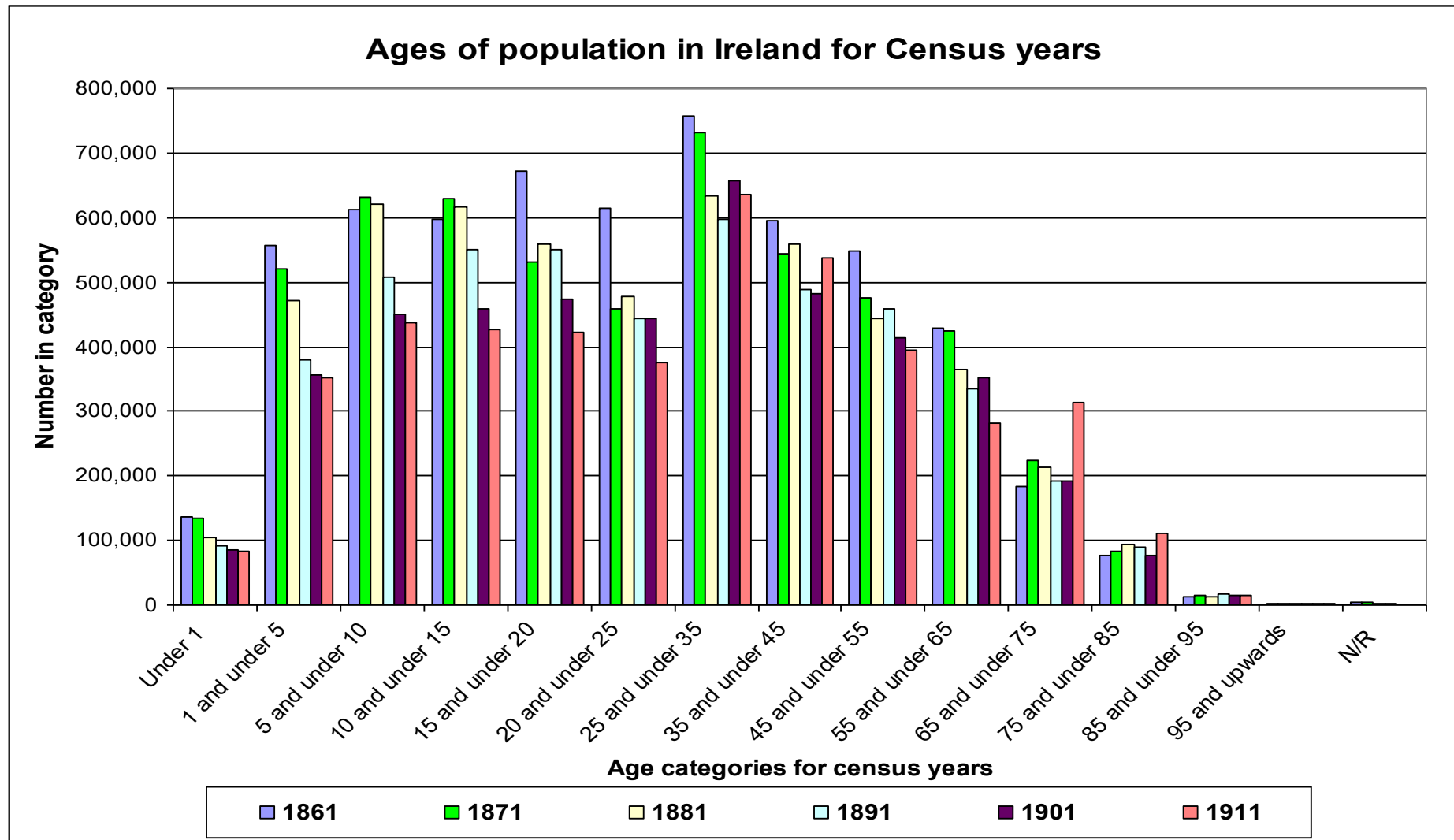


Fig. 3

Observations from the above chart:

For those under 1 year old the average population numbers just over 100,000.

Then for those in the age 1 to 5 years old the higher number is in 1861 with a decreasing number by census year to 1911.

For the 5 to 10 year olds the totals for 1861, 1871 and 1881 are close. We see this again in 1901 and 1911 but on lower numbers and 1891 lies near the average for that category.

Similarly the pattern is repeated for the group in the aged 10 to 15 year olds.

The 1861 figure for the group 15 to 20 year olds is noticeably higher than in latter years and the years 1871, 1881 and 1891 showing numbers close to the group average. We see lower than average numbers for 1901 and 1911.

The average of the years is reasonably steady at around 540,000 for those in the 5 to 20 year old grouping.

Like in the group 15 to 20 year olds we see a rather similar situation is seen for the 20 to 25 year old group with the high in 1861 and 1871 to 1901 being closer to each other and 1911 being lower than average. However the average drops to near 470,000 people. The above is clearly seen in the following chart, Fig 4. Up to now we had 5 year intervals of age (except those under 1).

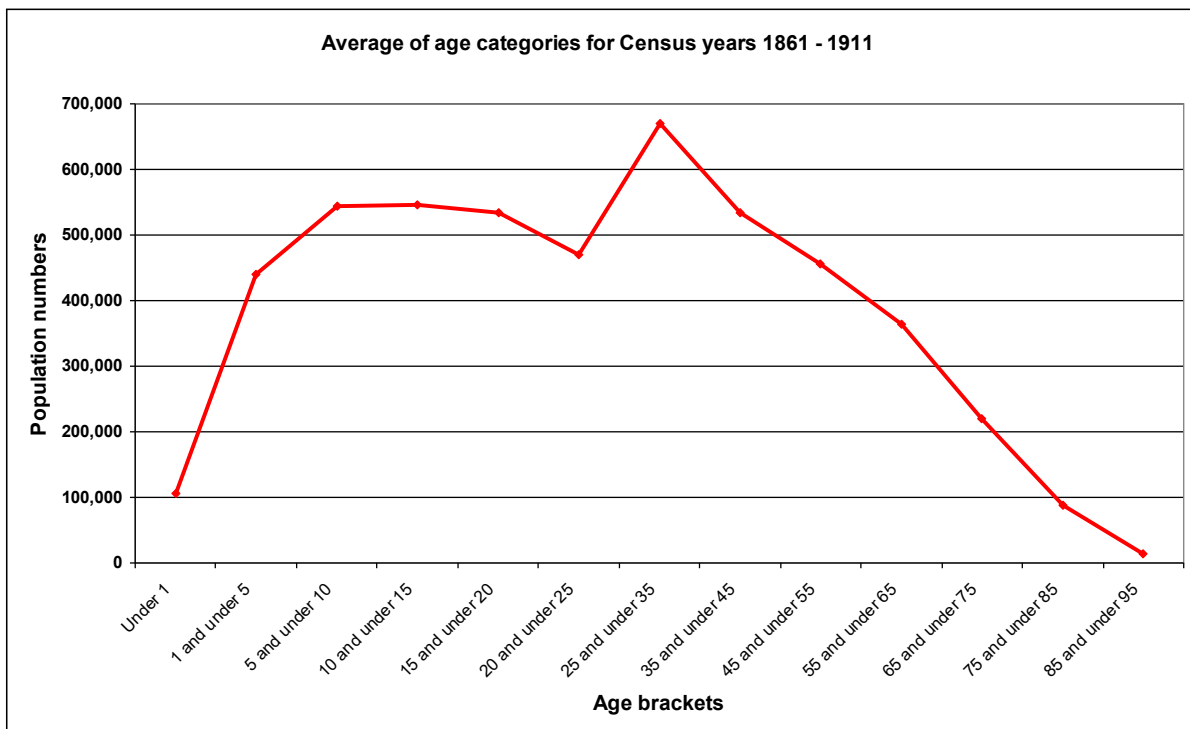


Fig 4

The age groupings are now in 10 year intervals and consequently we see a very significant increase in the numbers in the 25 to 35 age bracket. Then as is clear from the above chart there is an almost straight line drop off in numbers with increasing age brackets.

So let us combine the numbers so we compare numbers at all of 10 year intervals. So working back from the 25 to under 35 bracket we will use 15 to less than 25 and 5 to less

than 15 years as data. Ages less than 5 years are consequently excluded. Thus our data average over the census figures of 1861 to 1911 becomes:

| Age Bracket | Population | Age Bracket | Population |
|-----------------|------------|-----------------|------------|
| 0 and under 5 | Excluded | 45 and under 55 | 455,607 |
| 5 and under 15 | 1,090,392 | 55 and under 65 | 364,299 |
| 15 and under 25 | 1,004,034 | 65 and under 75 | 219,806 |
| 25 and under 35 | 669,227 | 75 and under 85 | 88,731 |
| 35 and under 45 | 534,370 | 85 and under 95 | 14,201 |

Table 4

This is represented graphically on Fig 5. (Note: symbol “<” signifies “less than”)

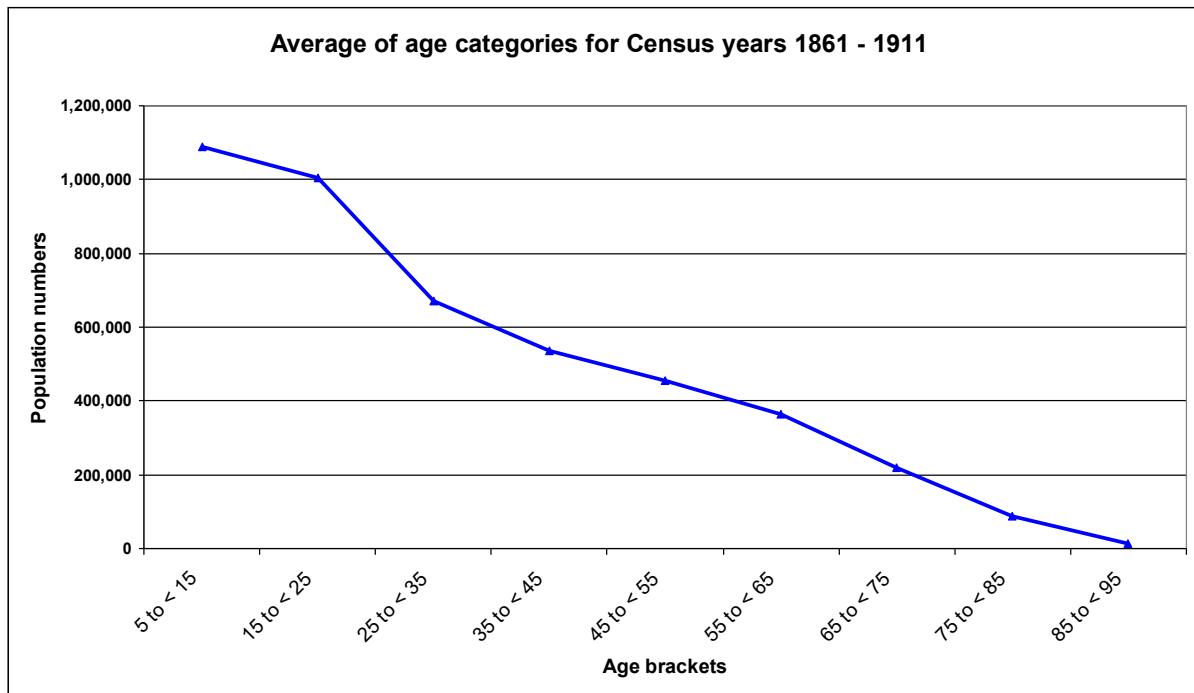


Fig 5

Population and frequency of age

Let us now look at the frequency of occurrence of each age for the Census of 1901 and 1911. These numbers are obtained from an analysis of the Census data available on the National Archives of Ireland website as of March 2017.

I have set out the number of people for each age for the 1901 census and the 1911 census on Table 5.

A striking feature is the very noticeable numbers for the decade years and to a lesser extent for the years ending in 5 as e.g. 35, 45. This is easier viewed on Fig 6.

| Age | 1901 | 1911 | Age | 1901 | 1911 | Age | 1901 | 1911 |
|-----|---------|--------|-----|---------|--------|-----|-------|--------|
| 0 | 86,522 | 85,577 | 42 | 38,423 | 45,974 | 84 | 4,064 | 5,161 |
| 1 | 79,083 | 78,265 | 43 | 27,619 | 35,947 | 85 | 3,183 | 3,395 |
| 2 | 88,896 | 89,058 | 44 | 29,906 | 37,501 | 86 | 2,695 | 3,247 |
| 3 | 91,027 | 89,958 | 45 | 63,758 | 57,652 | 87 | 1,554 | 1,796 |
| 4 | 93,564 | 90,534 | 46 | 35,625 | 40,086 | 88 | 1,392 | 1,630 |
| 5 | 90,761 | 90,649 | 47 | 25,281 | 32,409 | 89 | 831 | 1,009 |
| 6 | 89,760 | 87,809 | 48 | 41,029 | 43,559 | 90 | 2,795 | 1,889 |
| 7 | 90,689 | 88,470 | 49 | 21,761 | 28,611 | 91 | 494 | 502 |
| 8 | 89,013 | 85,249 | 50 | 125,137 | 78,387 | 92 | 542 | 544 |
| 9 | 87,247 | 83,994 | 51 | 15,936 | 21,196 | 93 | 315 | 348 |
| 10 | 94,103 | 85,738 | 52 | 31,062 | 33,436 | 94 | 348 | 332 |
| 11 | 83,373 | 82,206 | 53 | 21,062 | 26,263 | 95 | 443 | 350 |
| 12 | 94,940 | 86,084 | 54 | 29,540 | 31,021 | 96 | 340 | 278 |
| 13 | 86,083 | 81,411 | 55 | 48,541 | 38,554 | 97 | 181 | 141 |
| 14 | 97,738 | 90,007 | 56 | 34,579 | 35,065 | 98 | 259 | 191 |
| 15 | 90,974 | 83,538 | 57 | 18,432 | 23,243 | 99 | 151 | 91 |
| 16 | 98,054 | 87,132 | 58 | 29,829 | 29,920 | 100 | 278 | 115 |
| 17 | 89,328 | 83,246 | 59 | 15,785 | 20,012 | 101 | 46 | 38 |
| 18 | 102,448 | 86,751 | 60 | 124,964 | 53,571 | 102 | 54 | 35 |
| 19 | 88,495 | 80,916 | 61 | 13,754 | 15,306 | 103 | 34 | 29 |
| 20 | 109,262 | 86,458 | 62 | 23,581 | 22,718 | 104 | 25 | 21 |
| 21 | 77,856 | 71,544 | 63 | 18,445 | 19,503 | 105 | 29 | 16 |
| 22 | 89,959 | 75,961 | 64 | 20,635 | 23,679 | 106 | 14 | 4 |
| 23 | 76,865 | 68,829 | 65 | 39,651 | 33,387 | 107 | 9 | 4 |
| 24 | 86,071 | 72,936 | 66 | 17,586 | 24,835 | 108 | 7 | 9 |
| 25 | 85,898 | 71,640 | 67 | 14,005 | 22,909 | 109 | 4 | 7 |
| 26 | 80,983 | 70,397 | 68 | 17,807 | 32,436 | 110 | 4 | 6 |
| 27 | 63,101 | 61,051 | 69 | 8,302 | 32,595 | 111 | 1 | 1 |
| 28 | 81,444 | 73,125 | 70 | 58,126 | 42,515 | 112 | 4 | 4 |
| 29 | 48,220 | 54,593 | 71 | 6,365 | 24,435 | 113 | 0 | 1 |
| 30 | 118,584 | 94,374 | 72 | 11,589 | 37,004 | 114 | 1 | 1 |
| 31 | 31,933 | 42,090 | 73 | 7,674 | 33,778 | 115 | 1 | |
| 32 | 53,821 | 60,752 | 74 | 9,045 | 29,451 | 116 | 1 | |
| 33 | 38,791 | 49,421 | 75 | 16,010 | 25,830 | 117 | 0 | |
| 34 | 47,212 | 57,042 | 76 | 9,206 | 19,219 | 118 | 1 | |
| 35 | 68,677 | 70,167 | 77 | 4,667 | 11,626 | 119 | 0 | |
| 36 | 52,656 | 62,559 | 78 | 7,671 | 13,511 | 120 | 0 | |
| 37 | 33,593 | 46,923 | 79 | 3,807 | 6,661 | 121 | 0 | |
| 38 | 52,326 | 63,625 | 80 | 21,607 | 14,428 | 122 | 1 | |
| 39 | 29,943 | 43,345 | 81 | 3,278 | 3,909 | 460 | 1 | |
| 40 | 121,975 | 97,951 | 82 | 4,846 | 5,601 | N/R | 8,264 | 10,782 |
| 41 | 21,592 | 29,627 | 83 | 2,714 | 3,797 | | | |

Table 5

We may safely say that the one person of age 460 years in an error and we may wonder about the accuracy of a few more!

The age was left blank for 8,264 people in 1901 and 10,782 people in 1911 census.

Fig 6 demonstrates the numbers of each age for 1901 and 1911 with the very distinctive peaks for the decade years, and we will discuss again later.

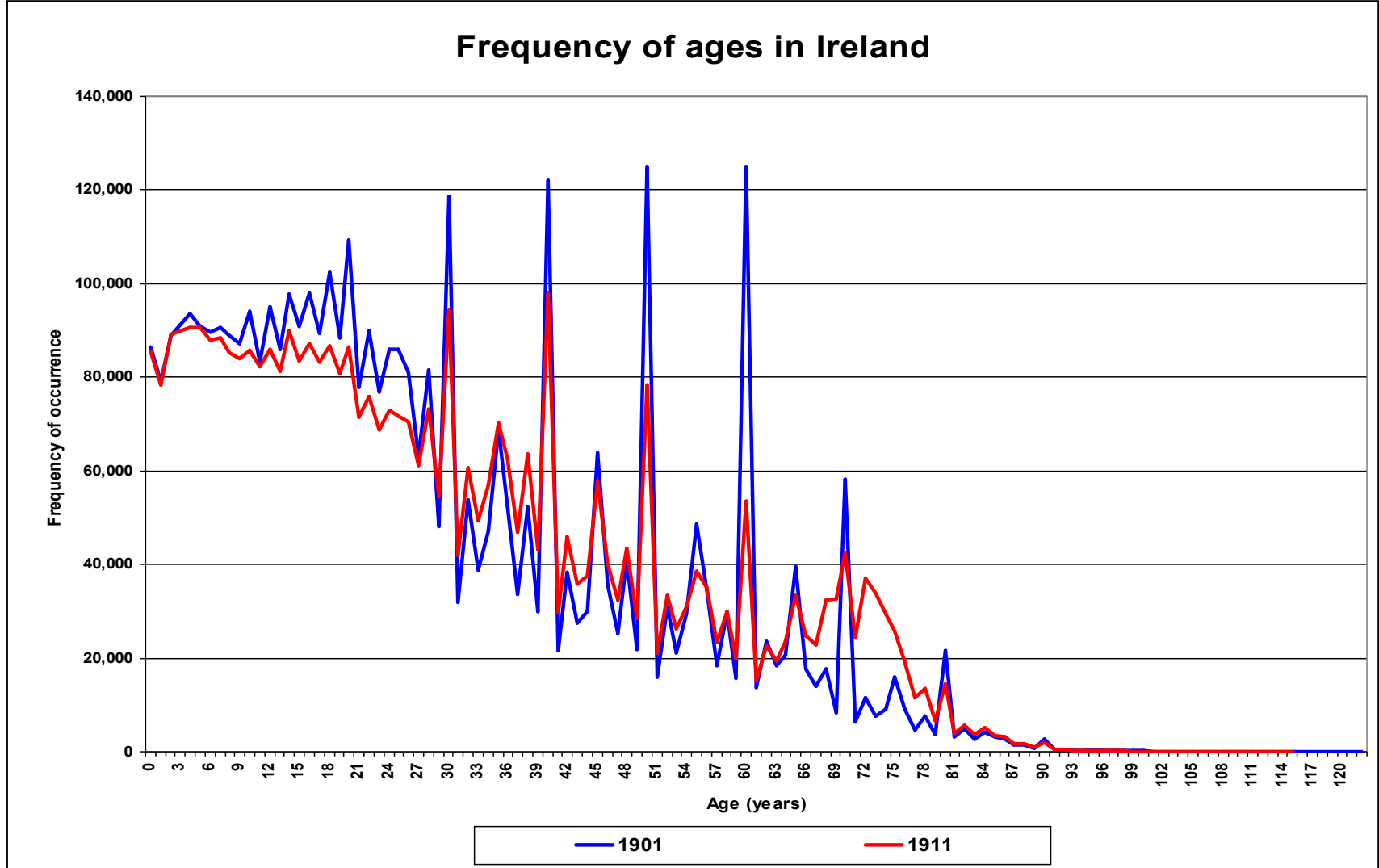


Fig 6

Now to view the chart for 1901 population numbers by age (years old) on Fig 7

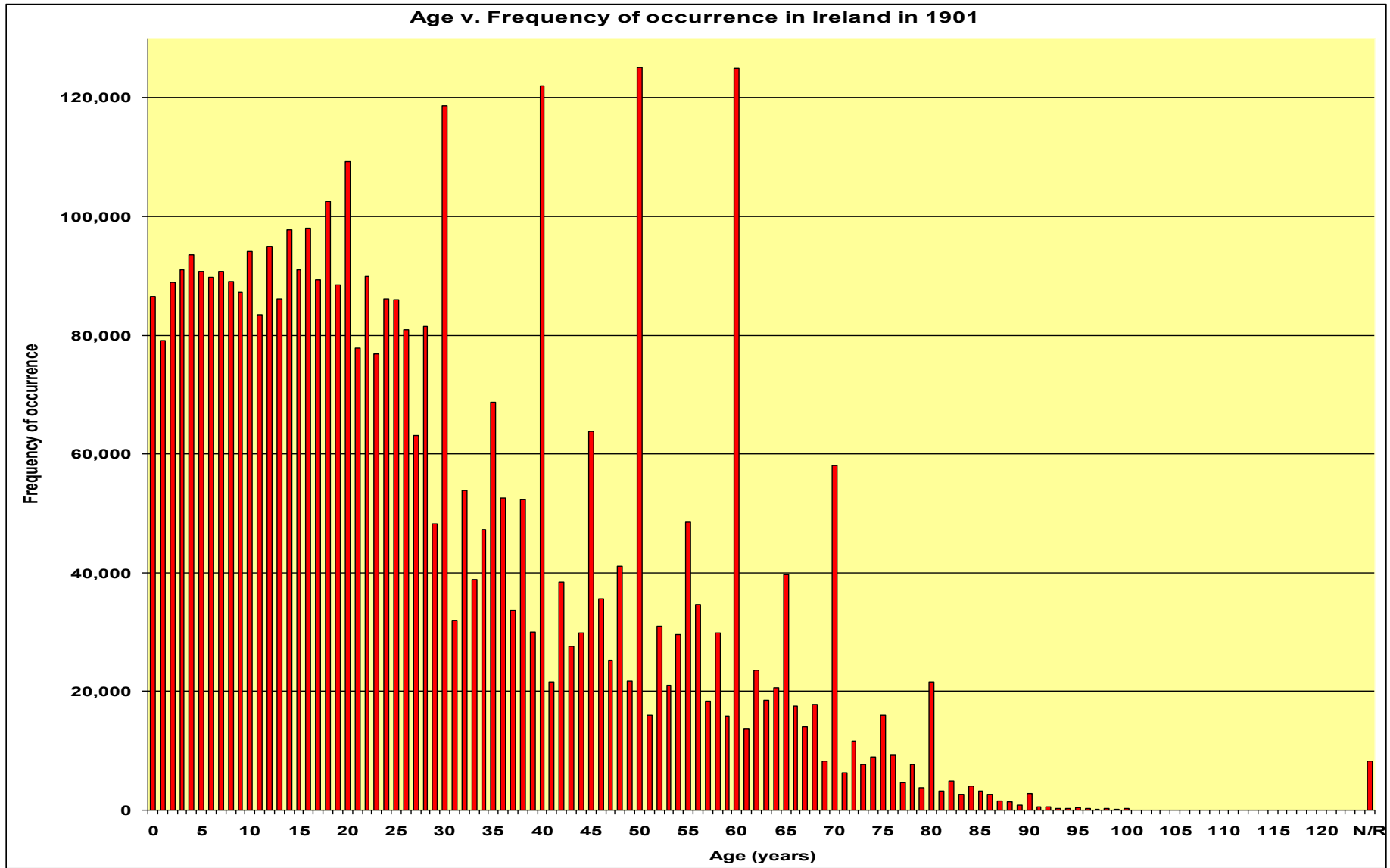


Fig 7

The most striking feature, for me, about the above chart is the columns which stand out from the general trend. These are for the ages of 30, 40, 50, 60, and also 70 years of age. These ages are much more frequent than other nearby ages. Interesting too is the fact that age 31, 41, 51, 61 and 71 are much lower than the general trend. Some of the ages ending in 5 e.g. 45 are also above the average but not as pronounced at all when compared with the decades numbers.

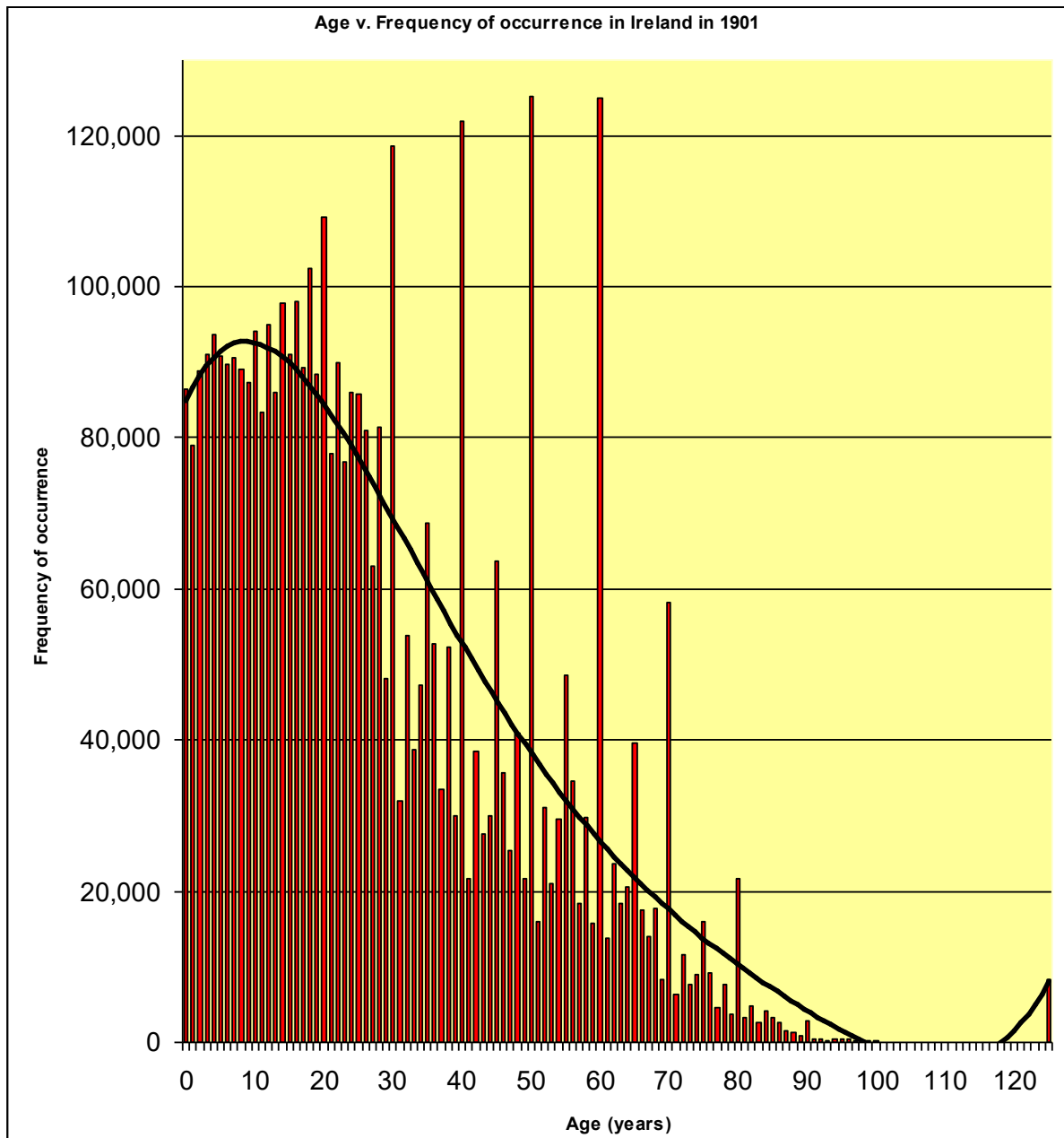


Fig 8

If we somewhat ignore the decade peaks and slightly apportion some to nearby ages then we can draw an approx. graph of **age v. frequency of occurrence** and this is shown in Fig. 8 as a thick black line. This follows an expected pattern with a decrease in frequency with increasing age.

Next to look at the 1911 census numbers for each age.

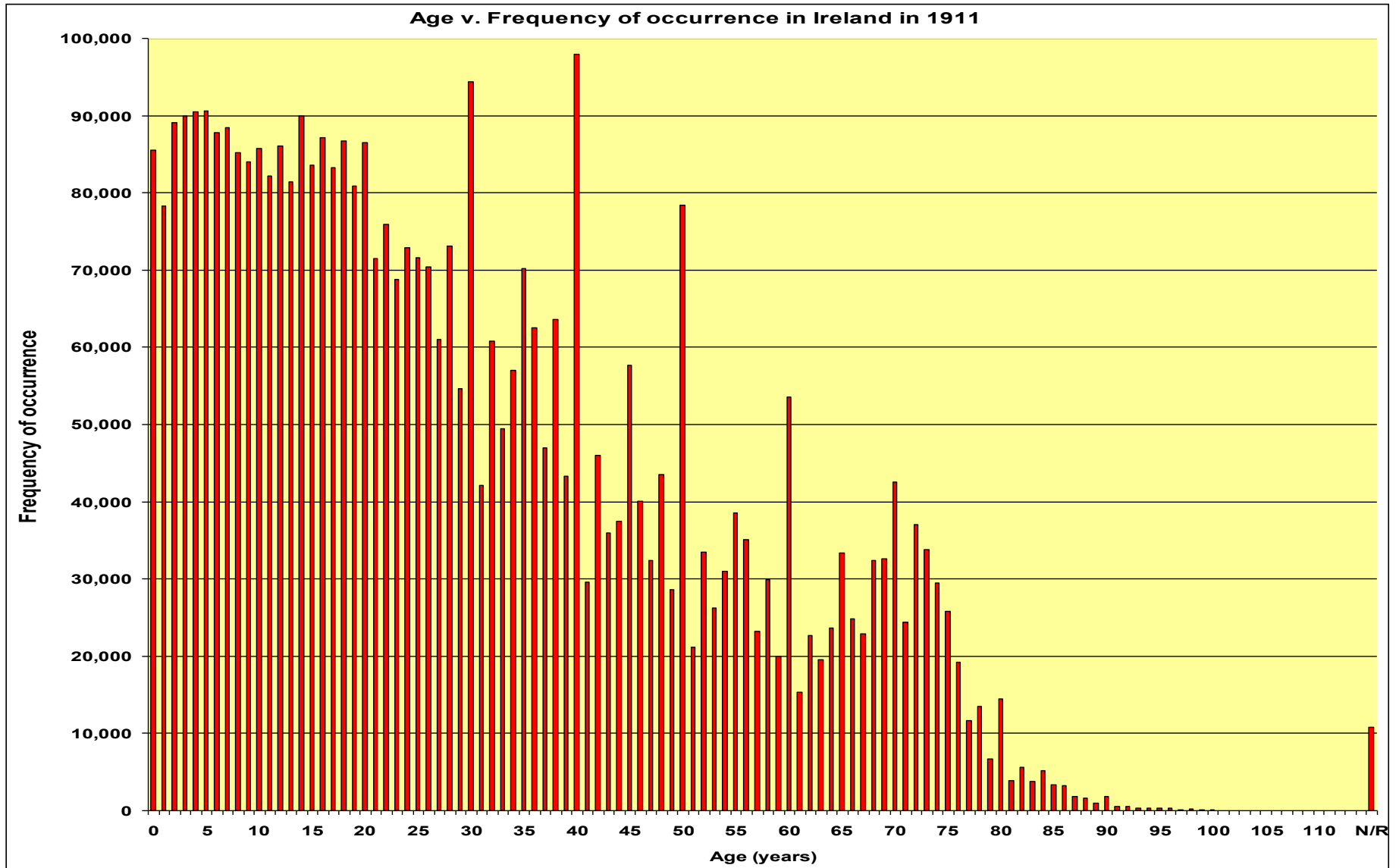


Fig 9

Again we gave the striking highs for the decades and not as pronounced for the 5's and the striking fact from Fig 9 is that the decreasing trend of *numbers living* versus *age* changed to increasing ages from the aged about 60 to aged 72 and decreasing again to aged 80 to meet the earlier decreasing trendline. To highlight the latter point I have added an averaging line in Fig. 10 below and this does clearly show the jump in the numbers of people living at aged 70 plus / minus about 9 years. In this I did ignore the spikes for aged 30, 40, 50 and 60 years.

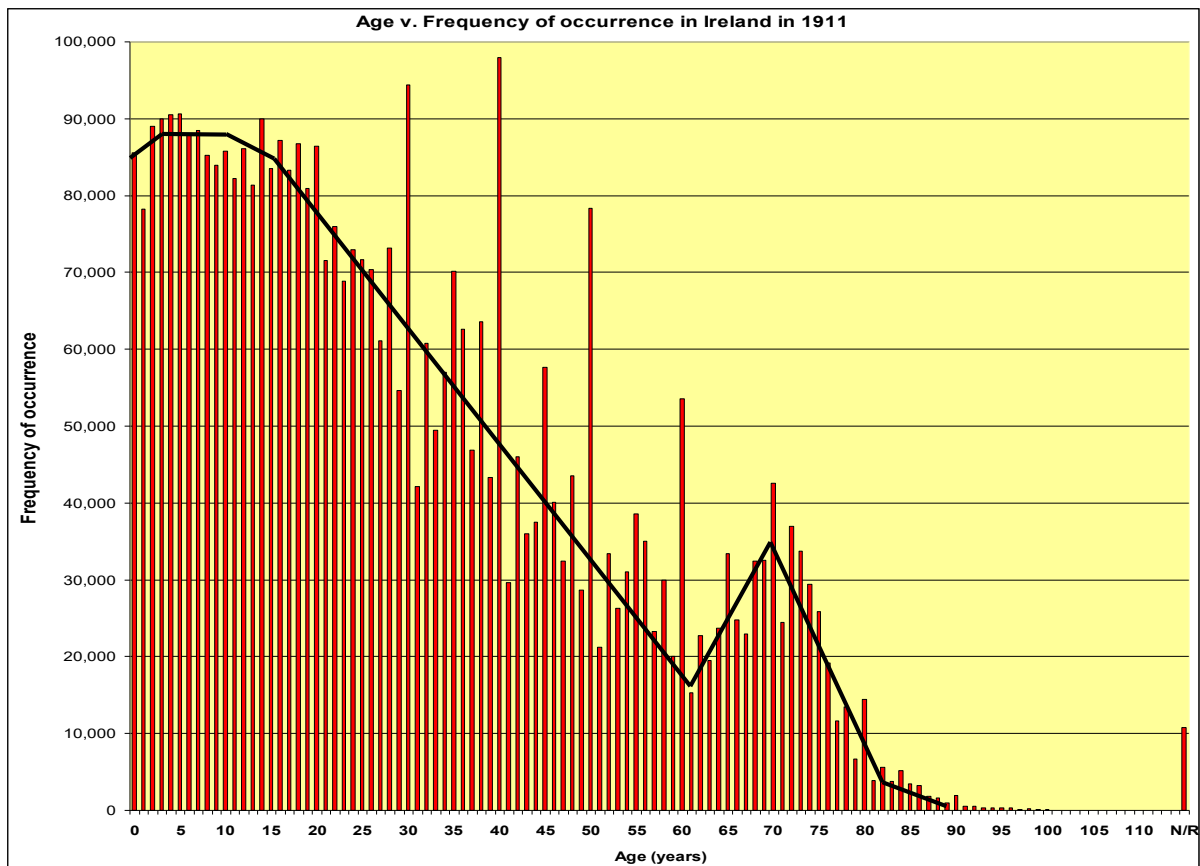


Fig 10

In browsing the Census of 1901 of Ireland and comparing the age of particular people with their age in the 1911 Census we see large variations between the two years. Some people aged just a few years in that 10 year period while others aged anything up to 18 years. This of course makes it very difficult to judge a persons date of birth. Presumably many people were unsure of their age.

If one can locate people on Church baptism records or post 1864 on the State Birth records then it does give a reliable birth date. In such cases where I have been able to check birth / baptism dates I did find that the age indicated in 1911 was generally much more accurate than in 1901; but also there were the exceptions!

One would expect that the baptism date of a child would be on or most likely after the birth date. Not what you will find always in these records in Ireland after State Records began in 1864 and indeed up to the early 1900's.

It was normal in that era that a Catholic child was baptised within a day or two of being born and indeed if the birth was early then the baptism may take place that day. It is not

uncommon to find a significant difference between a birth date on the State Register and the Baptism date in the Church Baptism Register. The baptism date could predate the birth date on the State Record by several weeks. One notes in the State record that the birth was often registered several weeks after the stated birth date. I tend to take the baptism date as being the more reliable. The child, Ellen Daly, on the link at the end of this document has a baptism date of 10 November 1880 and a birth date on the State Register as 20 December 1880, registered on 3 Jan 1881.

And of course we wonder if my claim that the ages quoted in the 1911 Census were more accurate for many of the people than they indicated in the earlier 1901 Census, then why the noticeable spike in ages for a few years either side of age 70 years.

Well, abnormal numbers are most prominent for the ages 20, 30, 40, 50, 60, 70 and 80 years. Less prominent high numbers can be observed for aged 35, 45, 55, 65 and 75 years.

Clearly many people were not sure of their age and it seems they often picked a nearby round number to a multiple of 10 as their age, as examples 30, 40, 50, etc.

Could it be that with the pension being available in 1909 that people suddenly “became” older in order to qualify?

The Old-Age Pensions Act 1908 was an Act of Parliament passed in 1908 and it provided for an old age pension to be paid to eligible people from 1 January 1909. Those eligible had to apply to a Local Pension Committee starting in October 1908 set up by the county councils. They had to be over 70 years and must have been a British subject for 20 years and have resided in the United Kingdom. It was open to both men and women, both married and single, and their yearly means must not exceed £31. 10s. 0d. Forms for applicants were available from end of September 1908 and had to be returned to the Postmaster of the Post Office that will pay the individual's benefit. The claims were assessed by the Pension Officers and then sent to the Local Pension Committee for approval.

Births, Deaths and Emigration

We have examined records of births and deaths prior to the registration of these being introduced in 1864. Let us look at the data from 1864 to 1914 as on the State database and compare that data with what was provided on *Documenting Ireland: Parliament, People and Migration*, which we used earlier and is on Table 6 below.

This table gives the recorded population for the Census years, the numbers of births, deaths, those who emigrated and the estimated population by year.

| Year | Census pop. | Births | Emigration | Deaths | Estimates |
|-------------|--------------------|---------------|-------------------|---------------|------------------|
| 1864 | | 136,414 | 114,169 | 93,144 | 5,640,527 |
| 1865 | | 144,970 | 101,497 | 93,154 | 5,594,589 |
| 1866 | | 146,090 | 99,467 | 93,027 | 5,522,942 |
| 1867 | | 144,388 | 80,624 | 93,503 | 5,486,509 |
| 1868 | | 146,051 | 61,018 | 86,185 | 5,465,914 |
| 1869 | | 145,659 | 66,568 | 89,593 | 5,449,094 |
| 1870 | | 149,846 | 74,855 | 90,462 | 5,418,512 |
| 1871 | 5,398,179 | 151,355 | 71,240 | 88,348 | 5,398,179 |
| 1872 | | 149,278 | 78,102 | 97,294 | 5,372,890 |
| 1873 | | 144,377 | 90,149 | 97,537 | 5,327,938 |
| 1874 | | 141,288 | 73,184 | 91,961 | 5,298,970 |
| 1875 | | 138,320 | 51,462 | 98,114 | 5,278,629 |
| 1876 | | 140,469 | 37,587 | 92,324 | 5,277,544 |
| 1877 | | 139,659 | 38,503 | 93,543 | 5,286,880 |
| 1878 | | 134,117 | 41,124 | 99,629 | 5,282,246 |
| 1879 | | 135,328 | 47,065 | 105,089 | 5,265,625 |
| 1880 | | 128,086 | 95,517 | 102,906 | 5,202,648 |
| 1881 | 5,145,770 | 125,847 | 78,417 | 90,035 | 5,145,770 |
| 1882 | | 122,648 | 89,136 | 88,500 | 5,101,018 |
| 1883 | | 118,163 | 108,724 | 96,228 | 5,023,811 |
| 1884 | | 118,875 | 75,863 | 87,154 | 4,974,561 |
| 1885 | | 115,951 | 62,034 | 90,712 | 4,938,588 |
| 1886 | | 113,927 | 63,135 | 87,292 | 4,905,895 |
| 1887 | | 112,400 | 82,923 | 88,585 | 4,857,119 |
| 1888 | | 109,557 | 78,684 | 85,892 | 4,801,312 |
| 1889 | | 107,841 | 70,477 | 82,908 | 4,757,385 |
| 1890 | | 105,254 | 61,313 | 85,850 | 4,717,959 |
| 1891 | 4,681,248 | 108,116 | 59,623 | 85,990 | 4,680,376 |
| 1892 | | 104,234 | 50,867 | 90,044 | 4,633,808 |
| 1893 | | 106,082 | 48,147 | 82,821 | 4,607,462 |
| 1894 | | 105,354 | 35,895 | 83,528 | 4,589,260 |
| 1895 | | 106,113 | 48,703 | 84,395 | 4,559,936 |
| 1896 | | 107,641 | 38,995 | 75,700 | 4,542,061 |
| 1897 | | 106,664 | 32,535 | 83,839 | 4,529,917 |
| 1898 | | 105,457 | 32,241 | 82,404 | 4,518,478 |
| 1899 | | 103,900 | 41,232 | 79,699 | 4,502,401 |
| 1900 | | 101,459 | 45,288 | 87,606 | 4,468,501 |
| 1901 | 4,445,630 | 100,976 | 39,613 | 79,119 | 4,445,630 |
| 1902 | | 101,863 | 40,190 | 77,676 | 4,434,551 |
| 1903 | | 101,831 | 39,789 | 77,358 | 4,417,757 |
| 1904 | | 103,811 | 36,902 | 79,513 | 4,408,103 |
| 1905 | | 102,832 | 30,676 | 76,071 | 4,399,308 |
| 1906 | | 103,536 | 35,344 | 74,427 | 4,397,571 |
| 1907 | | 101,742 | 39,082 | 77,334 | 4,388,451 |
| 1908 | | 102,039 | 23,295 | 76,891 | 4,384,664 |
| 1909 | | 102,759 | 28,676 | 74,973 | 4,386,601 |
| 1910 | | 101,963 | 32,457 | 74,894 | 4,385,421 |
| 1911 | 4,383,608 | 101,758 | 30,573 | 72,475 | 4,383,608 |
| 1912 | | 101,035 | 29,344 | 72,187 | 4,384,710 |
| 1913 | | 100,094 | 30,967 | 74,694 | 4,379,012 |
| 1914 | | 98,806 | 30,912 | 71,345 | 4,381,398 |

Table 6

Now from the State records as available on Irish Genealogy (*irishgenealogy.ie*) Table 7 contains the total recorded births by year (as on March 2017).

| Year | Births | Year | Births | Year | Births |
|------|---------|------|---------|------|---------|
| 1864 | 141,448 | 1881 | 128,129 | 1898 | 106,331 |
| 1865 | 148,569 | 1882 | 124,671 | 1899 | 113,449 |
| 1866 | 149,128 | 1883 | 120,525 | 1900 | 101,475 |
| 1867 | 147,309 | 1884 | 121,592 | 1901 | 100,502 |
| 1868 | 149,154 | 1885 | 118,511 | 1902 | 102,312 |
| 1869 | 148,693 | 1886 | 116,132 | 1903 | 102,051 |
| 1870 | 154,517 | 1887 | 114,126 | 1904 | 103,850 |
| 1871 | 154,311 | 1888 | 111,787 | 1905 | 103,263 |
| 1872 | 151,955 | 1889 | 109,827 | 1906 | 103,891 |
| 1873 | 147,477 | 1890 | 106,189 | 1907 | 100,279 |
| 1874 | 144,509 | 1891 | 109,764 | 1908 | 100,458 |
| 1875 | 141,772 | 1892 | 105,665 | 1909 | 102,515 |
| 1876 | 144,517 | 1893 | 107,489 | 1910 | 101,975 |
| 1877 | 143,792 | 1894 | 106,964 | 1911 | 101,770 |
| 1878 | 137,420 | 1895 | 107,622 | 1912 | 100,099 |
| 1879 | 138,369 | 1896 | 108,833 | 1913 | 99,993 |
| 1880 | 130,598 | 1897 | 107,745 | 1914 | 99,391 |

Table 7

The above data is shown graphically below on Fig 11

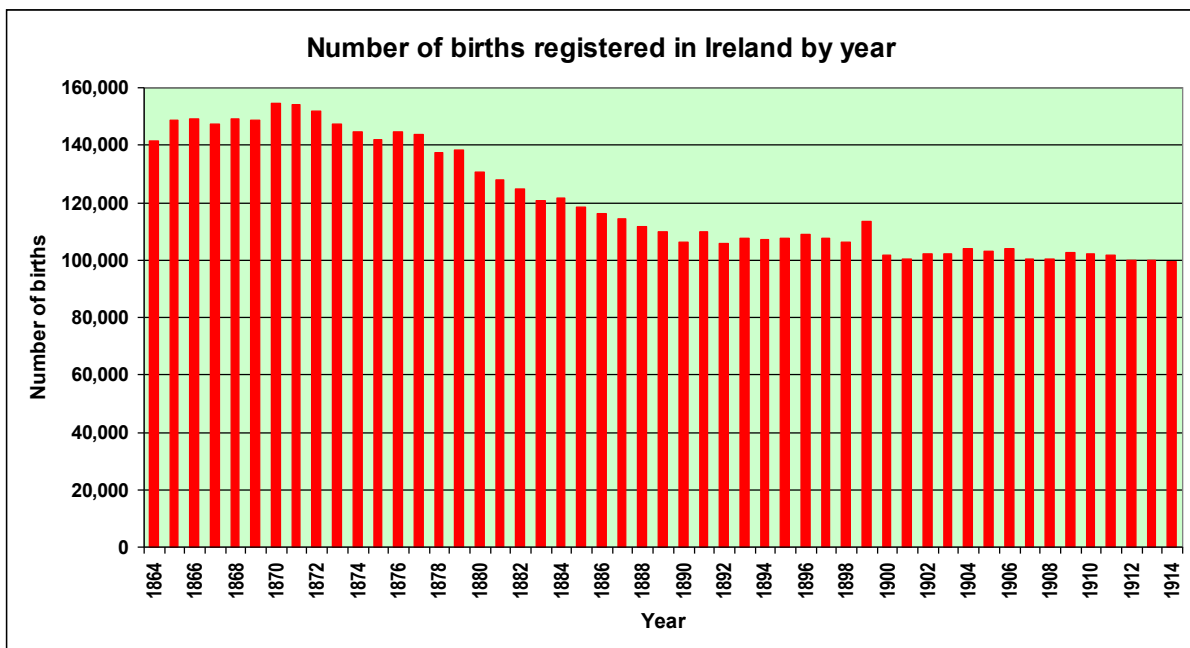


Fig 11

We observe that 1864 was a bit low but this to be expected in any new event being introduced but the next few years were steady rising to a high in 1870 and gradually declining to settle just above 100,000 after 1890 until it dropped below the 100,000 in 1913.

Similarly as we saw for the births we have on Table 8 the recorded death numbers for the selected years (as on March 2017).

| Year | Deaths | Year | Deaths | Year | Deaths |
|------|---------|------|--------|------|--------|
| 1864 | 99,271 | 1881 | 91,742 | 1898 | 83,427 |
| 1865 | 99,158 | 1882 | 90,248 | 1899 | 80,780 |
| 1866 | 96,235 | 1883 | 98,022 | 1900 | 88,858 |
| 1867 | 95,652 | 1884 | 89,584 | 1901 | 79,897 |
| 1868 | 87,864 | 1885 | 92,985 | 1902 | 78,910 |
| 1869 | 91,673 | 1886 | 89,389 | 1903 | 78,346 |
| 1870 | 92,302 | 1887 | 90,226 | 1904 | 80,341 |
| 1871 | 89,540 | 1888 | 87,572 | 1905 | 75,483 |
| 1872 | 98,691 | 1889 | 84,855 | 1906 | 75,123 |
| 1873 | 99,261 | 1890 | 87,412 | 1907 | 77,929 |
| 1874 | 94,041 | 1891 | 87,555 | 1908 | 77,455 |
| 1875 | 100,089 | 1892 | 91,213 | 1909 | 75,441 |
| 1876 | 94,455 | 1893 | 84,301 | 1910 | 75,405 |
| 1877 | 96,312 | 1894 | 84,939 | 1911 | 73,248 |
| 1878 | 102,098 | 1895 | 85,768 | 1912 | 72,597 |
| 1879 | 107,656 | 1896 | 76,953 | 1913 | 75,218 |
| 1880 | 105,011 | 1897 | 85,056 | 1914 | 72,000 |

Table 8

The above data is shown graphically below on Fig 12

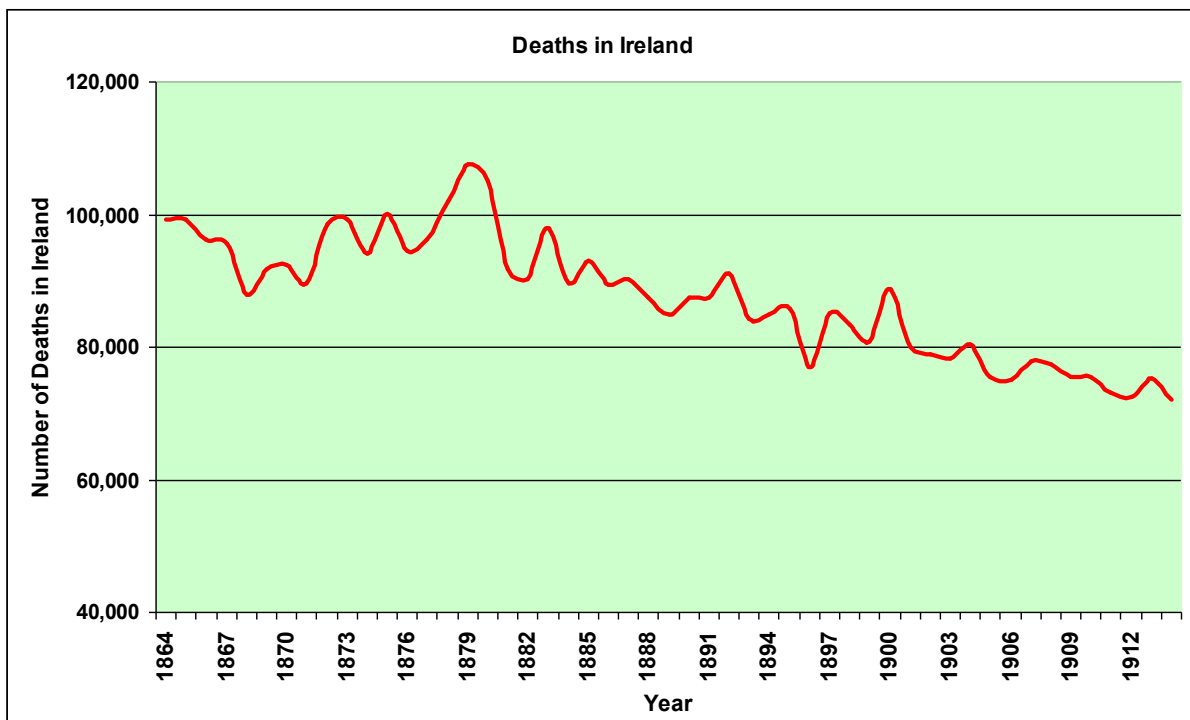


Fig 12

A drop from 1864 to 1868 in death numbers to rise to a peak in 1879 before tailing off to death numbers in 1914 of 72,000.

So now let us compare differences in numbers of stated births and deaths between 1864 and 1914 between those on DIPPAM and Irish Genealogy. These numbers are on Table 9.

| Year | DIPPAM Irish Genealogy | | | DIPPAM Irish Genealogy | | |
|---------------|------------------------|------------------|---------------|------------------------|------------------|---------------|
| | Births | | Difference | Deaths | | Difference |
| 1864 | 136,414 | 141,449 | 5,035 | 93,144 | 99,280 | 6,136 |
| 1865 | 144,970 | 148,568 | 3,598 | 93,154 | 99,164 | 6,010 |
| 1866 | 146,090 | 149,128 | 3,038 | 93,027 | 96,244 | 3,217 |
| 1867 | 144,388 | 147,309 | 2,921 | 93,503 | 95,656 | 2,153 |
| 1868 | 146,051 | 149,154 | 3,103 | 86,185 | 87,870 | 1,685 |
| 1869 | 145,659 | 148,693 | 3,034 | 89,593 | 91,675 | 2,082 |
| 1870 | 149,846 | 154,518 | 4,672 | 90,462 | 92,318 | 1,856 |
| 1871 | 151,355 | 154,311 | 2,956 | 88,348 | 89,551 | 1,203 |
| 1872 | 149,278 | 151,957 | 2,679 | 97,294 | 98,701 | 1,407 |
| 1873 | 144,377 | 147,476 | 3,099 | 97,537 | 99,269 | 1,732 |
| 1874 | 141,288 | 144,509 | 3,221 | 91,961 | 94,047 | 2,086 |
| 1875 | 138,320 | 141,772 | 3,452 | 98,114 | 100,097 | 1,983 |
| 1876 | 140,469 | 144,517 | 4,048 | 92,324 | 94,460 | 2,136 |
| 1877 | 139,659 | 143,792 | 4,133 | 93,543 | 96,318 | 2,775 |
| 1878 | 134,117 | 137,419 | 3,302 | 99,629 | 102,102 | 2,473 |
| 1879 | 135,328 | 138,368 | 3,040 | 105,089 | 107,664 | 2,575 |
| 1880 | 128,086 | 130,599 | 2,513 | 102,906 | 105,018 | 2,112 |
| 1881 | 125,847 | 128,128 | 2,281 | 90,035 | 92,096 | 2,061 |
| 1882 | 122,648 | 124,671 | 2,023 | 88,500 | 90,259 | 1,759 |
| 1883 | 118,163 | 120,523 | 2,360 | 96,228 | 98,037 | 1,809 |
| 1884 | 118,875 | 121,593 | 2,718 | 87,154 | 89,594 | 2,440 |
| 1885 | 115,951 | 118,511 | 2,560 | 90,712 | 92,989 | 2,277 |
| 1886 | 113,927 | 116,132 | 2,205 | 87,292 | 89,404 | 2,112 |
| 1887 | 112,400 | 114,126 | 1,726 | 88,585 | 90,243 | 1,658 |
| 1888 | 109,557 | 111,786 | 2,229 | 85,892 | 87,589 | 1,697 |
| 1889 | 107,841 | 109,826 | 1,985 | 82,908 | 84,881 | 1,973 |
| 1890 | 105,254 | 106,191 | 937 | 85,850 | 87,447 | 1,597 |
| 1891 | 108,116 | 109,762 | 1,646 | 85,990 | 87,446 | 1,456 |
| 1892 | 104,234 | 105,666 | 1,432 | 90,044 | 90,044 | 0 |
| 1893 | 106,082 | 107,489 | 1,407 | 82,821 | 84,214 | 1,393 |
| 1894 | 105,354 | 106,963 | 1,609 | 83,528 | 84,848 | 1,320 |
| 1895 | 106,113 | 107,623 | 1,510 | 84,395 | 85,667 | 1,272 |
| 1896 | 107,641 | 108,834 | 1,193 | 75,700 | 76,853 | 1,153 |
| 1897 | 106,664 | 107,746 | 1,082 | 83,839 | 84,941 | 1,102 |
| 1898 | 105,457 | 106,329 | 872 | 82,404 | 83,334 | 930 |
| 1899 | 103,900 | 113,447 | 9,547 | 79,699 | 80,706 | 1,007 |
| 1900 | 101,459 | 101,476 | 17 | 87,606 | 88,720 | 1,114 |
| 1901 | 100,976 | 100,502 | -474 | 79,119 | 79,810 | 691 |
| 1902 | 101,863 | 102,312 | 449 | 77,676 | 78,802 | 1,126 |
| 1903 | 101,831 | 102,052 | 221 | 77,358 | 78,222 | 864 |
| 1904 | 103,811 | 103,849 | 38 | 79,513 | 80,179 | 666 |
| 1905 | 102,832 | 103,263 | 431 | 76,071 | 75,310 | -761 |
| 1906 | 103,536 | 103,893 | 357 | 74,427 | 75,006 | 579 |
| 1907 | 101,742 | 100,319 | -1,423 | 77,334 | 77,777 | 443 |
| 1908 | 102,039 | 100,460 | -1,579 | 76,891 | 77,336 | 445 |
| 1909 | 102,759 | 102,516 | -243 | 74,973 | 75,280 | 307 |
| 1910 | 101,963 | 101,975 | 12 | 74,894 | 75,302 | 408 |
| 1911 | 101,758 | 101,770 | 12 | 72,475 | 73,064 | 589 |
| 1912 | 101,035 | 100,101 | -934 | 72,187 | 72,535 | 348 |
| 1913 | 100,094 | 99,993 | -101 | 74,694 | 75,048 | 354 |
| 1914 | <u>98,806</u> | <u>99,393</u> | <u>587</u> | <u>71,345</u> | <u>71,851</u> | <u>506</u> |
| Total: | 6,046,223 | 6,142,759 | 96,536 | 4,383,952 | 4,464,268 | 80,316 |

Table 9

We see that differences are not very significant generally and well within tolerable limits for the totals involved in that era. There is this exception in the births with that peak in 1899 which indeed may be an error? From 1900 both sets of figures are very close as we see below on Fig 13.

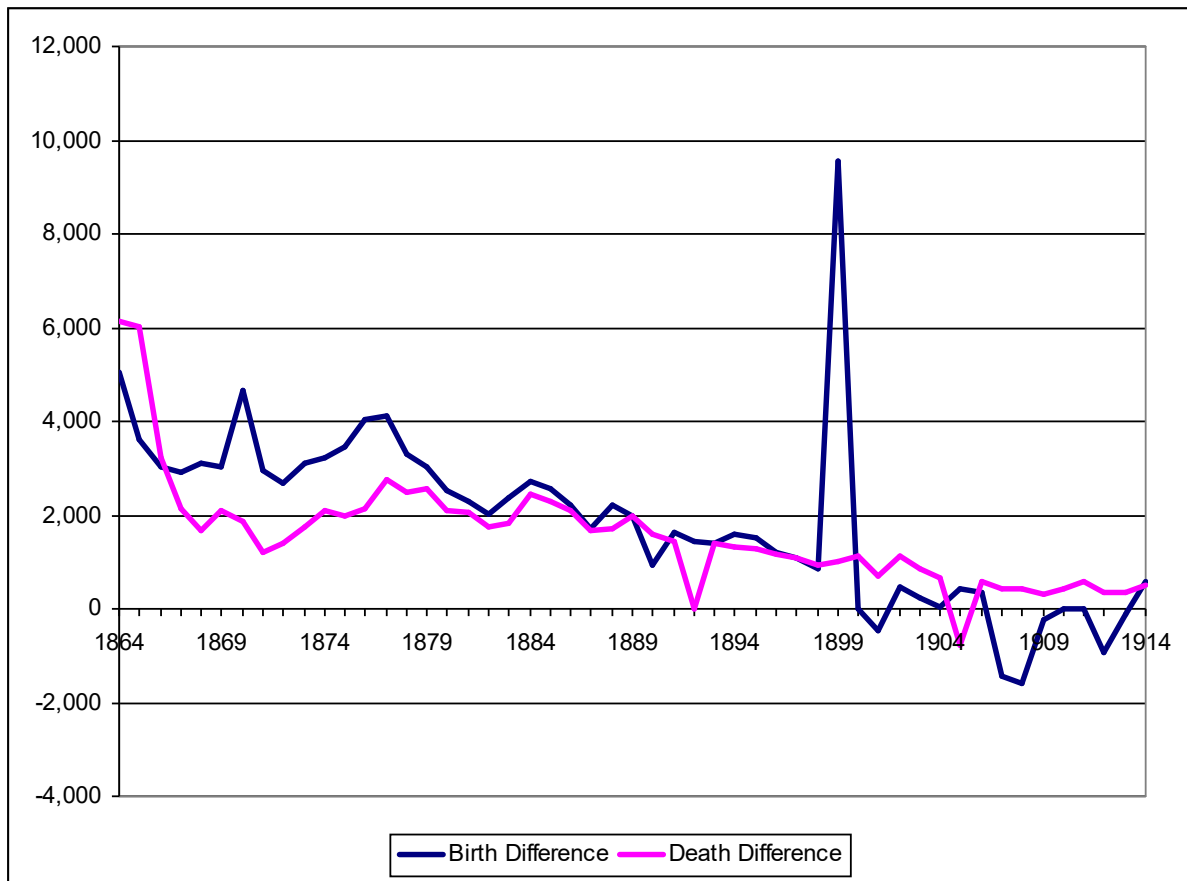


Fig 13

Emigration from Ireland

The Irish diaspora is a phrase growing in recognition and popularity. It refers to Irish people and their descendants who live outside Ireland.

People leaving Ireland is recorded since early Medieval times. However, it is from around 1700 that we have any data and since then it is estimated that up to 10 million people who were born in Ireland have emigrated. This is more than the population of Ireland at its historical peak in 1846 of almost 8.29 million.

After 1846, emigration from Ireland became a very significant feature and by 1890 it is thought that about 40% of people born in Ireland were living outside of Ireland.

The numbers leaving Ireland are from *Documenting Ireland: Parliament, People and Migration* and these are available there from 1840 and these are included on Table 10 for information.

| Year | Emigrants | Year | Emigrants | Year | Emigrants |
|------|-----------|------|-----------|------|-----------|
| 1840 | 90,743 | 1865 | 101,497 | 1890 | 61,313 |
| 1841 | 118,592 | 1866 | 99,467 | 1891 | 59,623 |
| 1842 | 128,344 | 1867 | 80,624 | 1892 | 50,876 |
| 1843 | 57,512 | 1868 | 61,018 | 1893 | 48,147 |
| 1844 | 70,686 | 1869 | 66,568 | 1894 | 35,895 |
| 1845 | 93,501 | 1870 | 74,855 | 1895 | 48,703 |
| 1846 | 129,851 | 1871 | 71,240 | 1896 | 38,995 |
| 1847 | 258,270 | 1872 | 78,102 | 1897 | 32,535 |
| 1848 | 248,089 | 1873 | 90,149 | 1898 | 32,241 |
| 1849 | 299,498 | 1874 | 73,184 | 1899 | 41,232 |
| 1850 | 280,896 | 1875 | 51,462 | 1900 | 45,288 |
| 1851 | 228,000 | 1876 | 37,587 | 1901 | 39,613 |
| 1852 | 190,322 | 1877 | 38,503 | 1902 | 40,190 |
| 1853 | 173,148 | 1878 | 41,124 | 1903 | 39,789 |
| 1854 | 140,555 | 1879 | 47,065 | 1904 | 36,902 |
| 1855 | 91,914 | 1880 | 95,517 | 1905 | 30,676 |
| 1856 | 90,781 | 1881 | 78,417 | 1906 | 35,344 |
| 1857 | 95,081 | 1882 | 89,136 | 1907 | 39,082 |
| 1858 | 64,337 | 1883 | 108,724 | 1908 | 23,295 |
| 1859 | 80,599 | 1884 | 75,863 | 1909 | 28,676 |
| 1860 | 84,621 | 1885 | 62,034 | 1910 | 32,457 |
| 1861 | 64,292 | 1886 | 63,135 | 1911 | 30,573 |
| 1862 | 70,117 | 1887 | 82,923 | 1912 | 29,344 |
| 1863 | 117,229 | 1888 | 78,684 | 1913 | 30,967 |
| 1864 | 114,169 | 1889 | 70,477 | 1914 | 30,912 |

Table 10

The above data is shown graphically below on Fig 14

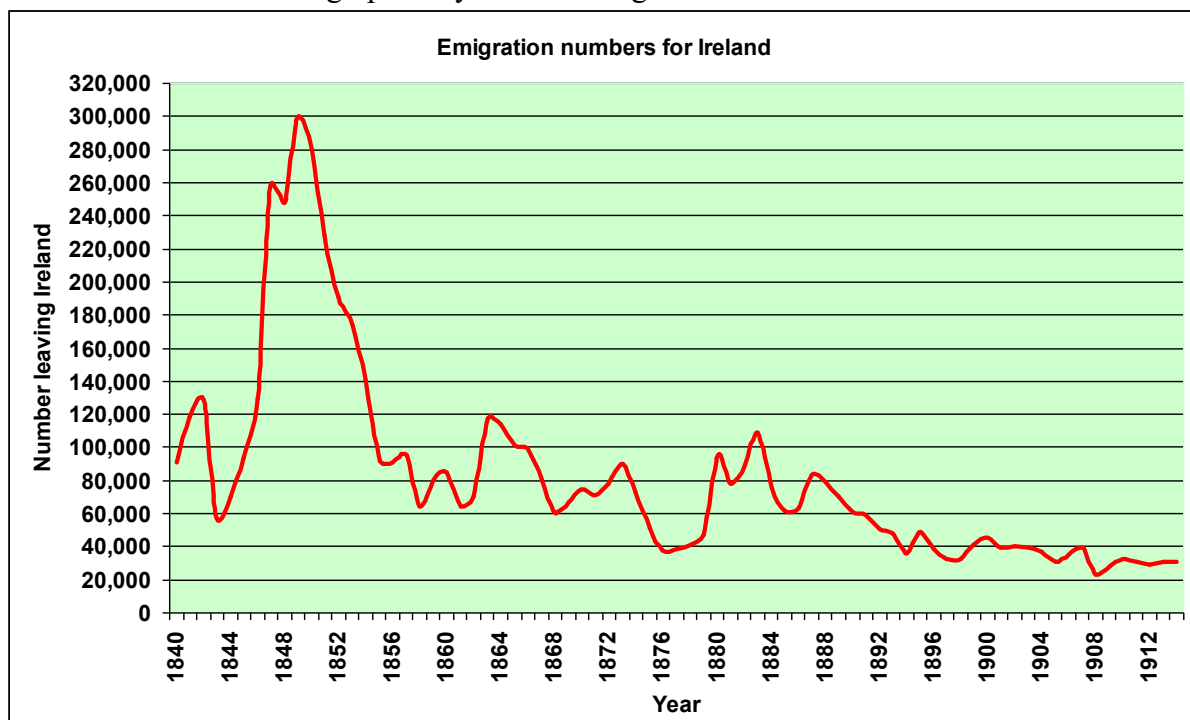


Fig 14

Population, births, deaths and emigration

Genealogists and those doing family tree research are well aware that all births, marriages and deaths were not registered on State records, indeed for genealogists the one you are looking for may be the “missing one” at times. However we will work with what data is available and perhaps the “missing” births will be balanced by the “missing” deaths when we test calculating annual population using the formula:

$$\text{population} = \text{previous year's population} + \text{births} - \text{deaths} - \text{emigration}$$

and we will examine from the year 1871 as this was the first census year after the requirement to register births, deaths and marriages after 1864. The census figure for 1871 is 5,398,179. So taking that figure as our start then using the above formula we obtain the calculated set of figures on Table 11. We began with the same census figure in 1871 and by the 1911 census the difference between Estimated and Calculated is 24,254, and by 1914 the difference is 16,950

While I expressed concern that some births and deaths were not registered on the State Registers perhaps the numbers are not that significant or the unregistered ones somewhat balance out.

| Year | Estimated | Calculated | Year | Estimated | Calculated |
|------|-----------|------------|------|-----------|------------|
| 1871 | 5,398,179 | 5,398,179 | 1893 | 4,607,462 | 4,615,552 |
| 1872 | 5,372,890 | 5,372,061 | 1894 | 4,589,260 | 4,601,483 |
| 1873 | 5,327,938 | 5,328,752 | 1895 | 4,559,936 | 4,574,498 |
| 1874 | 5,298,970 | 5,304,895 | 1896 | 4,542,061 | 4,567,444 |
| 1875 | 5,278,629 | 5,293,639 | 1897 | 4,529,917 | 4,557,734 |
| 1876 | 5,277,544 | 5,304,197 | 1898 | 4,518,478 | 4,548,546 |
| 1877 | 5,286,380 | 5,311,810 | 1899 | 4,502,401 | 4,531,515 |
| 1878 | 5,282,246 | 5,305,174 | 1900 | 4,468,501 | 4,500,080 |
| 1879 | 5,265,625 | 5,288,348 | 1901 | 4,445,630 | 4,482,324 |
| 1880 | 5,202,648 | 5,218,011 | 1902 | 4,434,551 | 4,466,321 |
| 1881 | 5,145,770 | 5,175,406 | 1903 | 4,417,757 | 4,451,005 |
| 1882 | 5,101,018 | 5,120,418 | 1904 | 4,408,103 | 4,438,401 |
| 1883 | 5,023,811 | 5,033,629 | 1905 | 4,399,308 | 4,434,486 |
| 1884 | 4,974,561 | 4,989,487 | 1906 | 4,397,571 | 4,428,251 |
| 1885 | 4,938,588 | 4,952,692 | 1907 | 4,388,451 | 4,413,577 |
| 1886 | 4,905,895 | 4,916,192 | 1908 | 4,384,664 | 4,415,430 |
| 1887 | 4,857,119 | 4,857,084 | 1909 | 4,386,601 | 4,414,540 |
| 1888 | 4,801,312 | 4,802,065 | 1910 | 4,385,421 | 4,409,152 |
| 1889 | 4,757,385 | 4,756,521 | 1911 | 4,383,608 | 4,407,862 |
| 1890 | 4,717,959 | 4,714,612 | 1912 | 4,384,710 | 4,407,366 |
| 1891 | 4,680,376 | 4,677,115 | 1913 | 4,379,012 | 4,401,799 |
| 1892 | 4,633,808 | 4,640,438 | 1914 | 4,381,398 | 4,398,348 |

Table 11

Or as on Fig 15 the above table is graphically represented. Clearly there is a close match between the DIPPAM estimated population and that calculated from the 1871 census figure up to 1914.

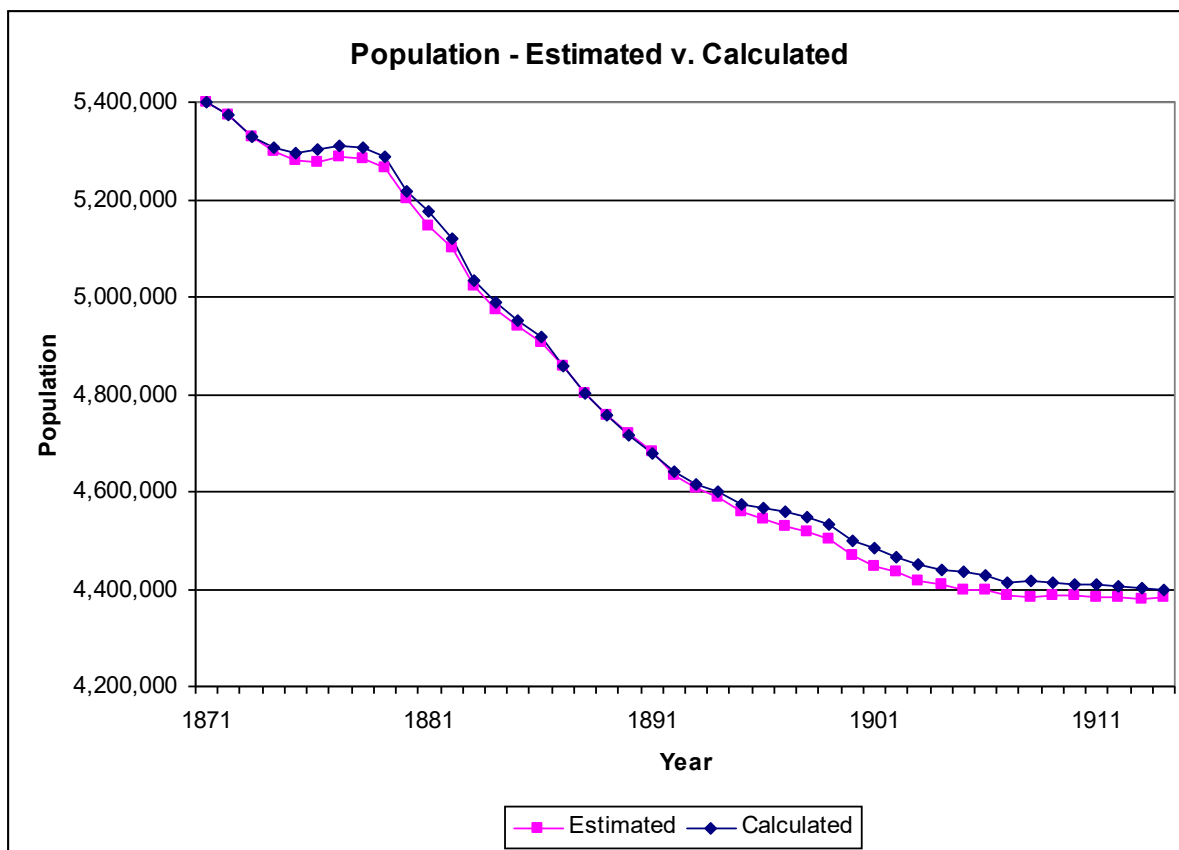


Fig 15

So finally let us use the 1871 census population as our start year and calculate the 1911 population using the formula:

$$1911 \text{ calculated population} = 1871 \text{ population} + \text{total births} - \text{total deaths} - \text{total emigration}$$

| | |
|---------------------------------------|-----------|
| Population in 1871 | 5,398,179 |
| Total of Births from 1871 to 1914 | 4,804,412 |
| Total of Deaths from 1871 to 1914 | 3,585,617 |
| Total of Emigration from 1871 to 1914 | 2,204,771 |

So that suggests a 1911 population of 4,412,203 which is well within acceptable limits, considering all births and deaths were not registered, as the census population was 4,383,608.

Deaths plus Emigration is virtually 1 million greater than Births for the 40 year period.

References

Annual reports of “Documenting Ireland: Parliament, People and Migration”
 Census of Ireland from National Archives
 Irish Genealogy – births and deaths
 Ellen Daly link referred to on page 14 <http://bmdnotices.com/remembrance-garden-book/viewremembrance.aspx?remembranceid=1405>

Return to [History / Genealogy page](#)